

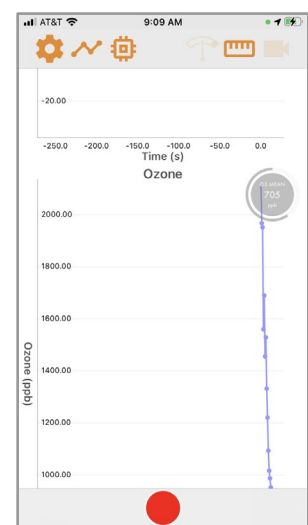
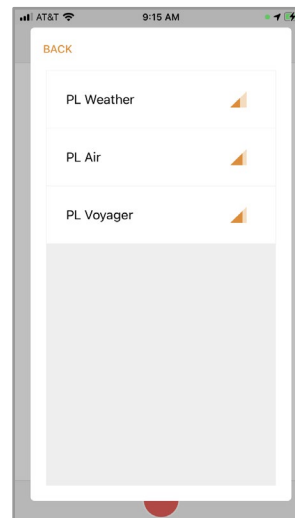
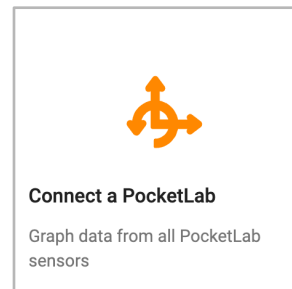
TASK CARD: AIR SENSOR

Directions

1. Open the app and click on the “Connect a PocketLab” square at the top.
2. Turn on PocketLab. It should appear in the menu box. Click on “PL Air.”

Investigate

3. Click on the **graph icon** at the top.
 - A. How many different types of data can it collect?
 - B. How many graphs can it create at one time?
4. Click on the **ruler icon** at the top.
 - A. How many different measurements can it take?
 - B. What does this icon allow students to change?
 - C. Using the graph icon, set some parameters, and hit the **record** button. Record for 30 seconds.
 - D. Then, hit the **stop** button and look at your data.
 - E. How can students change the x- and y-axis scales to see more in-depth data?
5. Click on the **share icon** on the far right.
 - A. What two things can students do with their data?
 - B. Use the blue “clear” button at the bottom to clear the data you recorded.
6. Click on the **memory icon** to the right of the graph icon at the top. What does this enable students to do?
7. Free play...



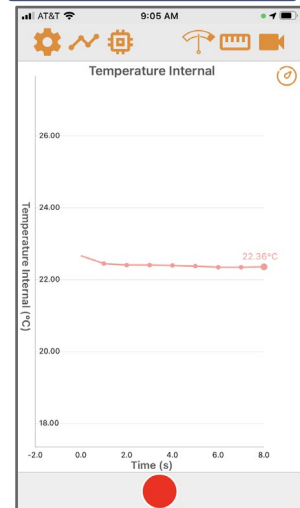
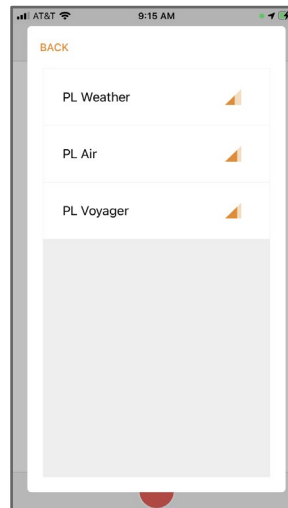
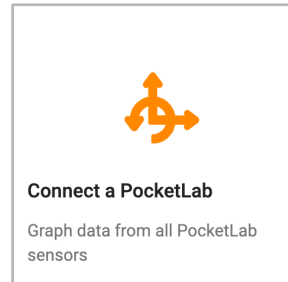
TASK CARD: WEATHER SENSOR

Directions

1. Open the app and click on the “Connect a PocketLab” square at the top.
2. Turn on PocketLab. It should appear in the menu box. Click on “PL Weather.”

Investigate

3. Click on the **graph icon** at the top.
 - A. How many different types of data can it collect?
 - B. How many graphs can it create at one time?
4. Click on the **ruler icon** at the top.
 - A. How many different measurements can it take?
 - B. What does this icon allow students to change?
 - C. Using the graph icon, set some parameters, and hit the **record** button. Record for 30 seconds.
 - D. Then, hit the **stop** button and look at your data.
5. Click on the **share icon** on the far right.
 - A. What two things can students do with their data?
 - B. Use the blue “clear” button at the bottom to clear the data you recorded.
6. Click on the **gas tank icon**. What does this allow students to change?
7. Click on the **video icon**. What happened?
8. Free play...



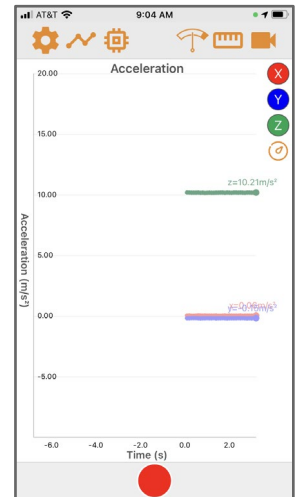
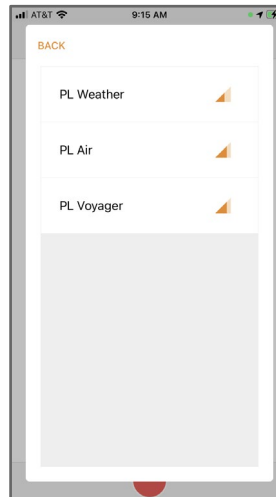
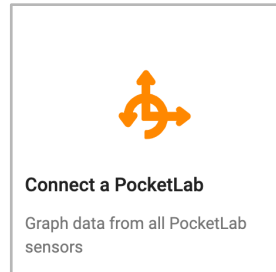
TASK CARD: VOYAGER SENSOR

Directions

1. Open the app and click on the “Connect a PocketLab” square at the top.
2. Turn on PocketLab. It should appear in the menu box. Click on “PL Voyager.”

Investigate

3. Click on the **graph icon** at the top.
 - A. How many different types of data can it collect?
 - B. How many graphs can it create at one time?
4. Click on the **ruler icon** at the top.
 - A. How many different measurements can it take?
 - B. What does this icon allow students to change?
 - C. Using the graph icon, set some parameters, and hit the **record** button. Record for 30 seconds.
 - D. Then, hit the **stop** button and look at your data.
5. Click on the **share icon** on the far right.
 - A. What two things can students do with their data?
 - B. Use the blue “clear” button at the bottom to clear the data you recorded.
6. Click on the **gas tank icon**. What does this allow students to change?
7. Click on the **video icon**. What happened?
8. Free play...



Acceleration: shorturl.at/orPV2

RED X =

BLUE Y =

GREEN Z =

PocketLab Measurements Explained: shorturl.at/yJKNV